



REFLECTION

Tee Hui Qing

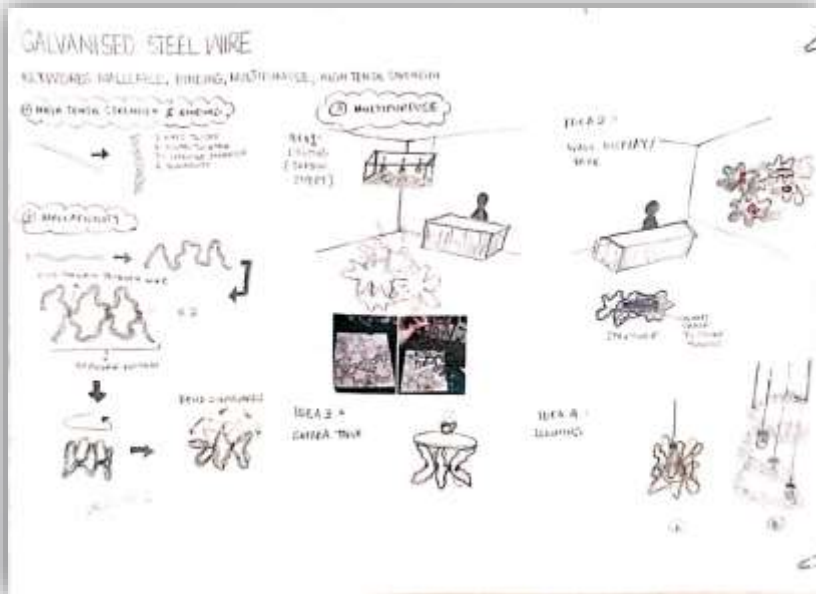
0334497

BIA Semester 2

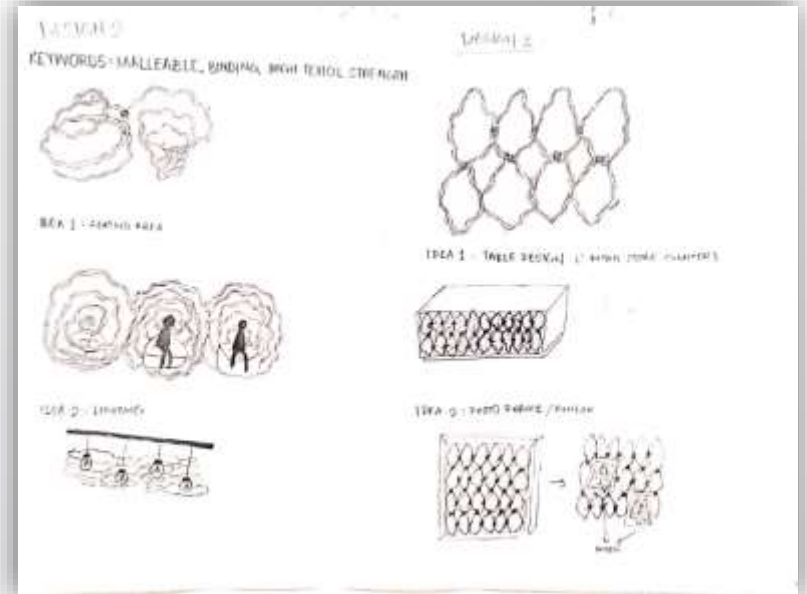


PROJECT 1: EXPLORE AND EXPRESS



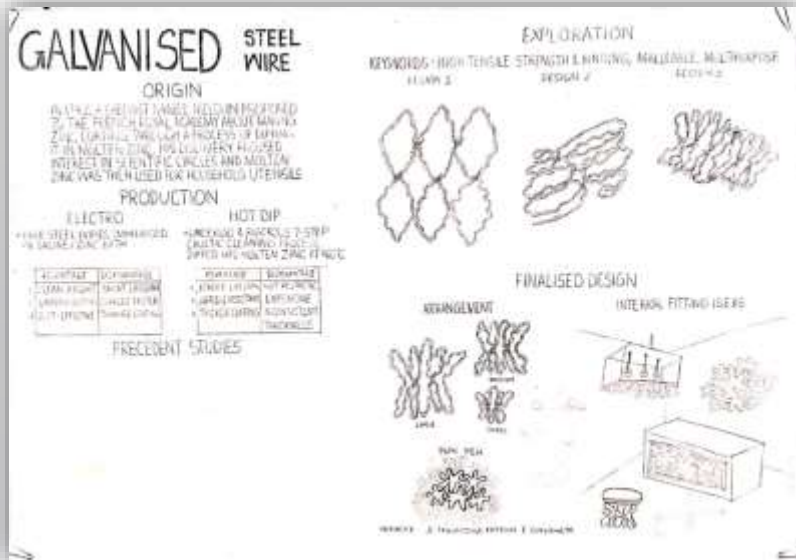


Butter Paper Progress 1: Design 1

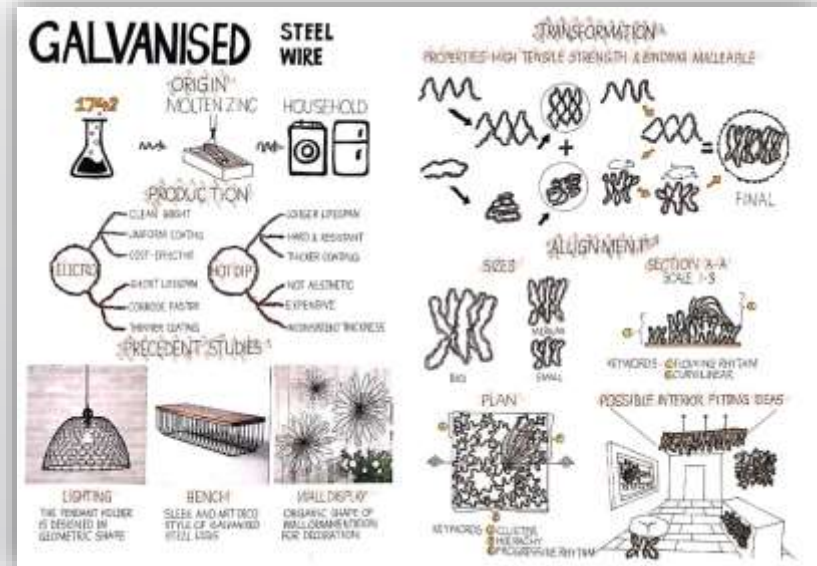


Butter Paper Progress 2: Design 2

In this assignment, we were asked to explore and research a type of material, then designing it after self-experimentation and analysis. I have chosen galvanised steel wire as it's a high tensile strength and binding material. I experimented it by twisting and bending it to form curvilinear shapes and played with the volume. Hence, I have came up with 2 designs that I prefer in the end.

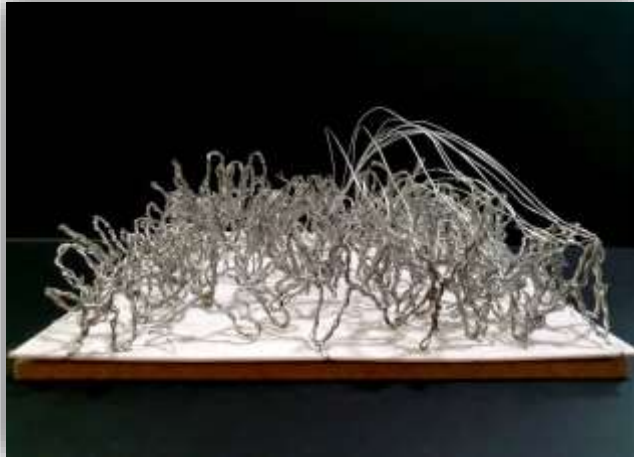


A2 Presentation Board Draft



A2 Final Presentation Board

By combining the two previous ideas, I developed the wire into a crown-like design and moved on into creating the layout of the A2 Presentation Board. After some feedbacks, I managed to compose the presentation board in a livelier way. Content of the board includes: Origin & Production of galvanised metal, Precedent Studies, Transformation, Design Alignment.



Material Board Elevation



Material Board Bird's Eye View



Material Board Top View

Above pictures are my material board, made of 3 sizes (small, medium, large) crown-like metal design, clustered together that forms a progressive rhythm as the size decreases from the centre (large) to the side (small). I also tied thin wire strands on a particular spot to create a flowing rhythm and indirectly became the hierarchy of the material board. No glue was needed as they are all bound with thin wires too.



PROJECT 2: MOULD & MEND





Early Stage of Design Development



First Submission (Failed)

Getting inspired by the flowing strands of wires on my material board, I stacked them and surprisingly it became a good development of the flowing rhythm that I was expected to see. I was pleased with the result so I continued the joint and make them twist and turned like it's in motion. However, I misunderstood the keyword cluster and at the same time, it couldn't show its potential of being used in an interior space. Thus, resubmission is required.



Redo model



Redo model with chandelier display

Going back on track, I did research again about the keyword "cluster" and tried improving and improvising the crown-like metal into a similar but different composition of design so my metals wouldn't go waste but still retaining the correct interpretation of the keywords I found in my first design. In the end, it turned out like a continuous tree-like structure but still bulky. This was also when I realised it would be a decent idea to utilise it to display chandeliers.



FINAL DESIGN PROJECT: A [LIVE] CAPPSULE



MALACCA POSTCARDS



Hotel Puri Facade



Coffee Shop Interior



Hotel Puri Interior



Coffee Shop Interior



Antique Chandeliers

We had a 2 days 1 night class trip to Malacca trip and we were assigned to observe Jonker streets on our own to find inspirations about the interior spaces and products we can sell in our retail store. Thus, I have drawn few which I found interesting: Hotel Puri that we stayed has extraordinary floral carvings under the Peranakan theme, A coffee shop showcasing modern interior design and unique antique chandeliers that makes people to indulge into its beauty.

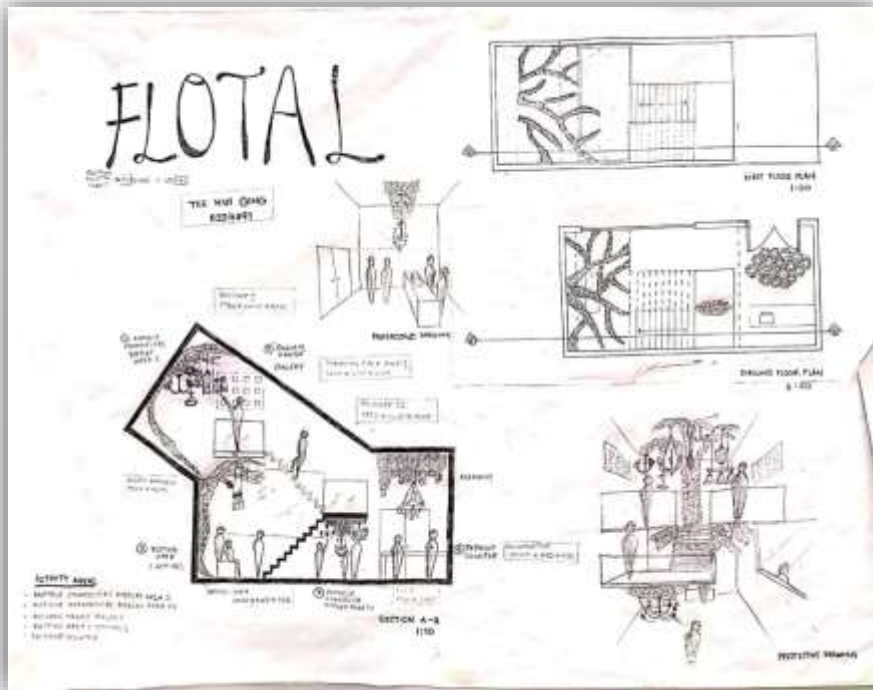
PROPOSAL & POSTCARDS



Product and Design Proposal

Since my design also strongly symbolises **Flowing** rhythm and **metal**, I immediately thought of naming my retail store **Flotal**. Instead of the stereotype way of hanging the chandeliers on the ceiling, I feel that people would be more mesmerised if there were some interesting structure to display them better. Thus, my metal structure can be a creative solution to get rid of the conventional lighting shop.

CRIT 1: DESIGN PROGRAMME & SPATIAL CONTEXT



Manual Orthographic Drawings



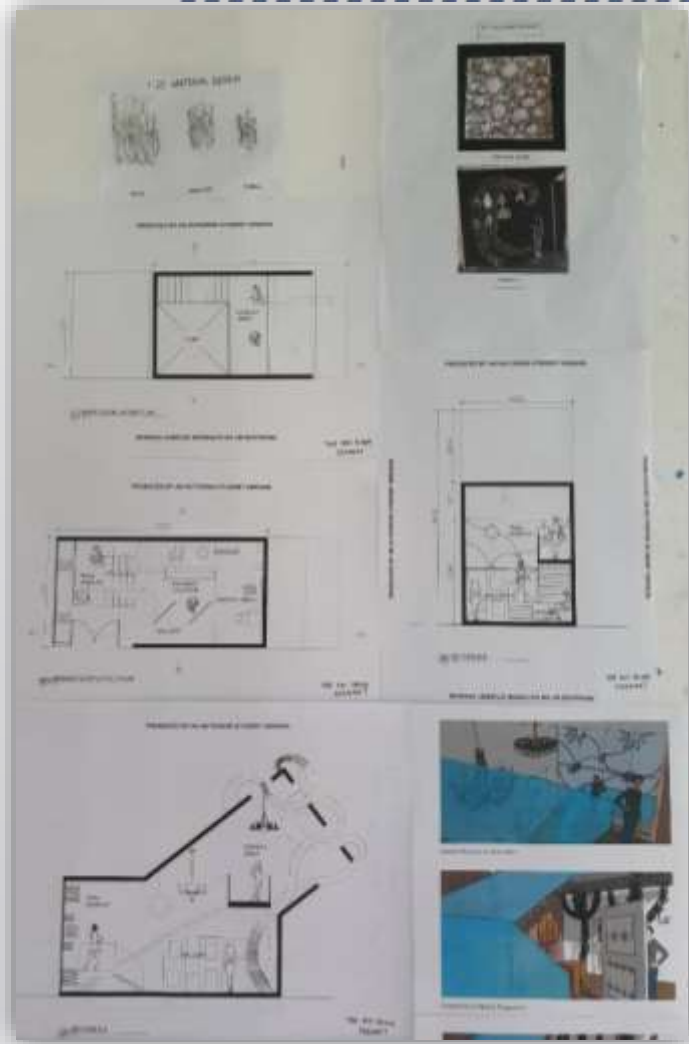
Pin Up with Mock Up Model



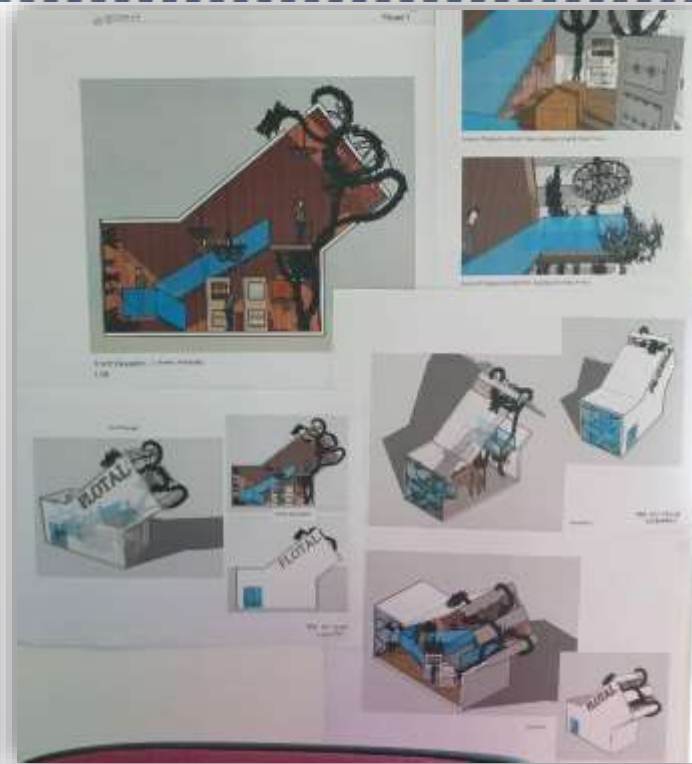
Mock up model (1:50)

Given the context of using only 2 4000 (W) X 8000 (L) X 4000 (H) rectangular boxes to form a retail store by combining them however we like, I thought of intersecting the boxes in a manner that best suited my idea in placing the metal structure into the interior space. Consisting of a mezzanine floor allows me to utilise the space for chandelier display and gallery. On the ground floor, I thought of placing a seating area and a payment counter for customers to rest and make payment.

CRIT 2: CREATIVITY, FUNCTION & ORTHOGRAPHIC DRAWING



Pin Up



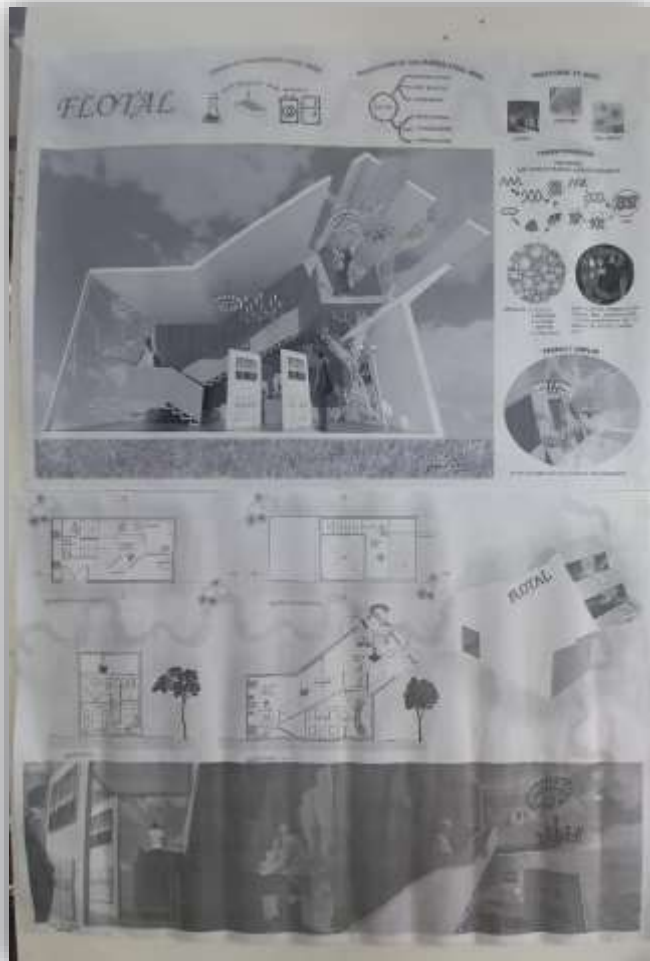
Pin Up



Mock up model (1:50)

After Amendments of Design, Flotal now contains a main display area on the mezzanine floor, lighting wall display in front of the main entrance and a gallery on the ground floor. I have shown both floor plans and 2 cutting sections in CAD drawings and 3D images using the Sketch Up software. A 1:50 scale model was also done to help better understand the usage of the interior spaces in my retail store.

CRIT 3: FINAL PRESENTATION BOARD DRAFT



Pin Up



Colour Indication

By using Photoshop, I learn how to collage pictures by adding background to the retail store and humans to scale to show the activities in Flotal. In order to show a storyline, my board is started off with Assignment 1 to clearly explain what my whole project is all about.

FINAL PIN UP + DESIGN REVIEW & PRESENTATION



Pin Up



Final Presentation Boards

Improvements made since last Crit:

1. Reduced Opacity of background
2. Physical Model Interior Perspective
3. 1 more Interior Perspective
4. Background of the Isometric (Façade)

CONCLUSION

Thanks to this semester, I am able to develop my ideas in interior spacing programmes through CAD Drawings and independent learned digital software such as Sketch Up and Photoshop. I am grateful to have guidance and inspirations from my lecturers throughout this semester. Thank you.

My Blog Link:

<https://joyceteehq.wixsite.com/interiorarchitecture/asian-architecture-copy-1>

