

Accessability & Traffic

Vehicular Pathing

Highlighted Roads are the main access roads to Jao Tim Cafe. Traffic flow is reportedly high especially during weekends and peak hours such as lunch hours as numerous shops are situated here.

Pedestrian Pathing

Highlighted Roads are the frequently occupied paths by tourists and locals as they prefer walking on foot to their destination and admiring the beautiful and authentic street views.



Pasar Seni MRT Station
350 M 5 Min Walk to
Jao Tim cafe



Jao Tim Cafe
Double Storey
Pre-war
shophouse cafe



Bus Station
- Pasar Seni
- Kotaraya



Cafes
- Vintage 1988
- The 5 Elements
- Leaf & Co.



Parking Lots
- Central market
- Kotaraya

The everyday life at Jalan Sultan



Hopping Around Cafes
to have coffees & teas



Ocassional prays in
Kuan Yin Temple

Enjoy
different
soothing
ambiences in
various coffee
shops



Chit-chatting and joke
around food stalls



Enjoying delicacies
and specialties
while hanging
out with family
and friends

Jalan Sultan

City Centre, 50000 Kuala Lumpur,
Wilayah Persekutuan Kuala Lumpur



Urban Sketching

Cycling & Sightseeing

REXKL Short Film Festival

Sketching on the spot

Social Activities

Art & Culture

Jalan Sultan is formed as one of the earliest settlements besides Jalan Petaling in KL as a result of tin mining in the early 90's.

This results in the richness of culture mixture brought by the chinese immigrants. People gather here to taste the unique delicacies sold by old businesses that are still running strong now.

Mural Arts at Jalan Panggung and stalls along Jalan Petaling strongly highlights the beauty of the old streets around Jalan Sultan. There are also plenty of social activities for people to engage in and meet new friends.

Food

Beef Noodle

Burger & Fries

Wan Tan Mee

Nasi Lemak

Char Kuey Teow



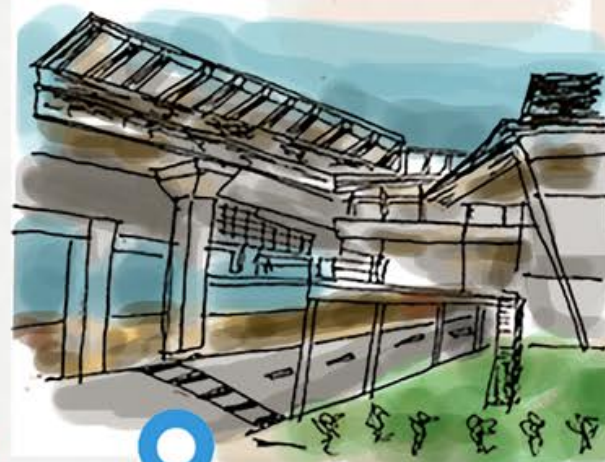
Tian Jing & Lim Kee Cafe



Jao Tim cafe & Hai-O Shop

REXKL

Jalan Petaling



Pasar Seni MRT Station

Landmarks

Mural



Cabaret Gir Mural



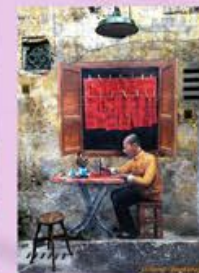
Kids Playing Mural



Grandpa Erhu Mural



Couple Mural



Calligrapher Mural

Strolling and Sightseeing

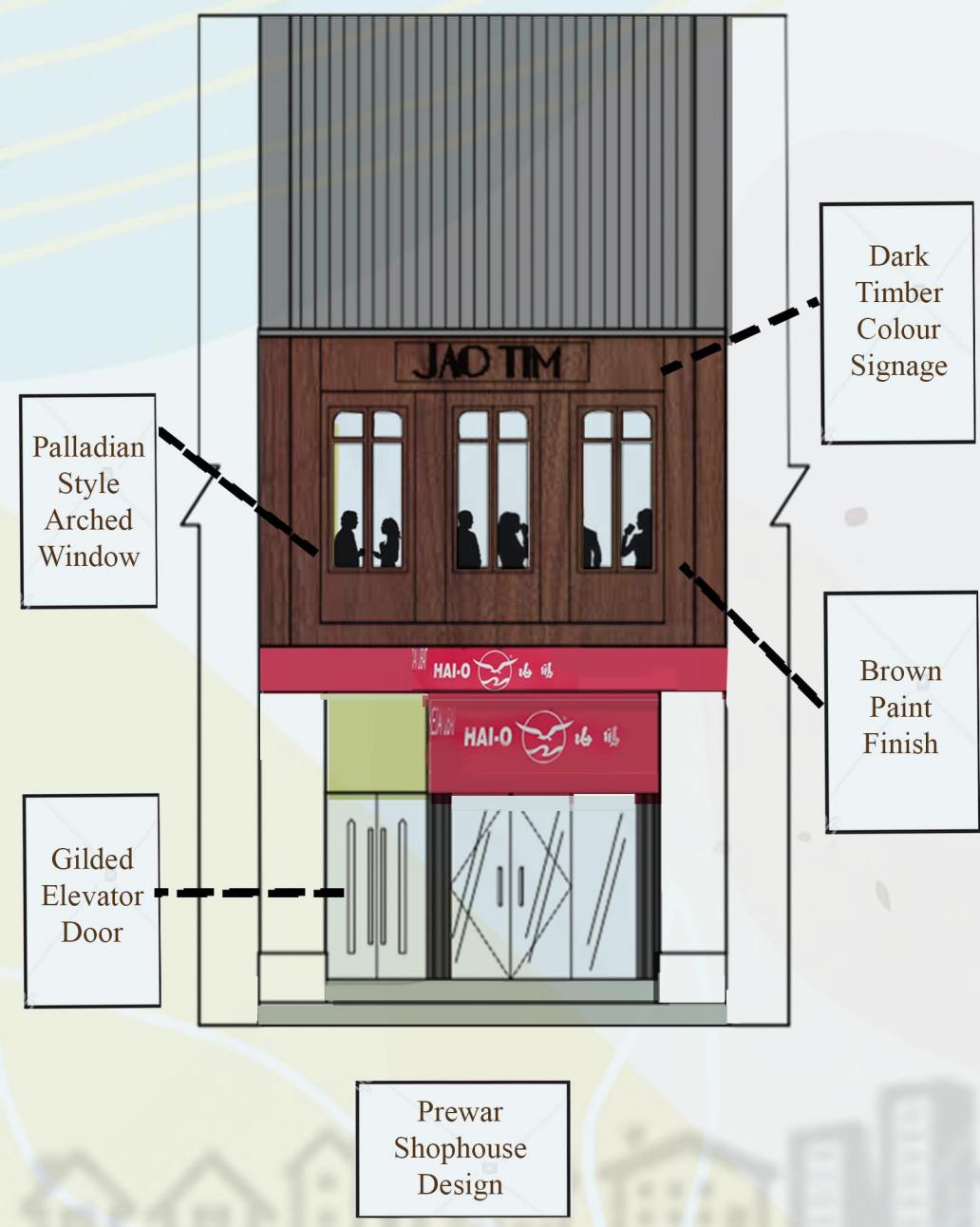
Taking memorable photographs

Tea Breaks and Chit-chats

Human Behaviour

Made By: Tee Hui QIng BIA Sem 3

Exterior Elevation



Targeted Consumers

Couple
Students
Family
Tourists

Facilities

Projector
Projector Screen
PA System

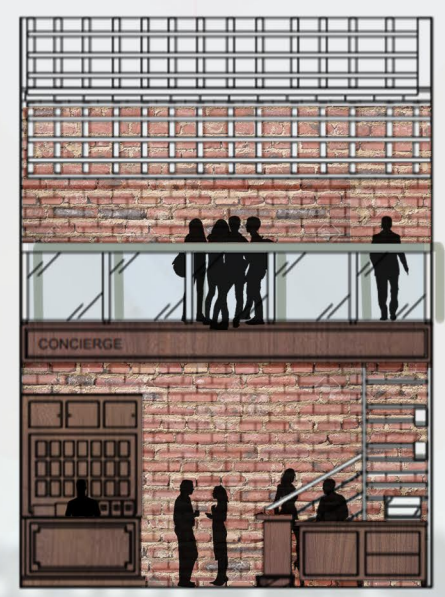
Sun & Wind Orientation

Wind Orientation
Sun Orientation

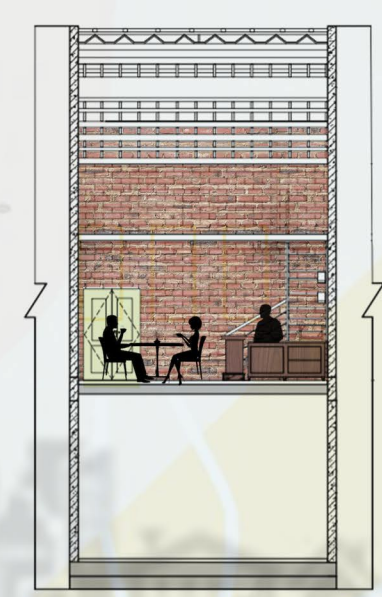
Peak Hours

Busy Hours at 3pm
especially Wednesdays

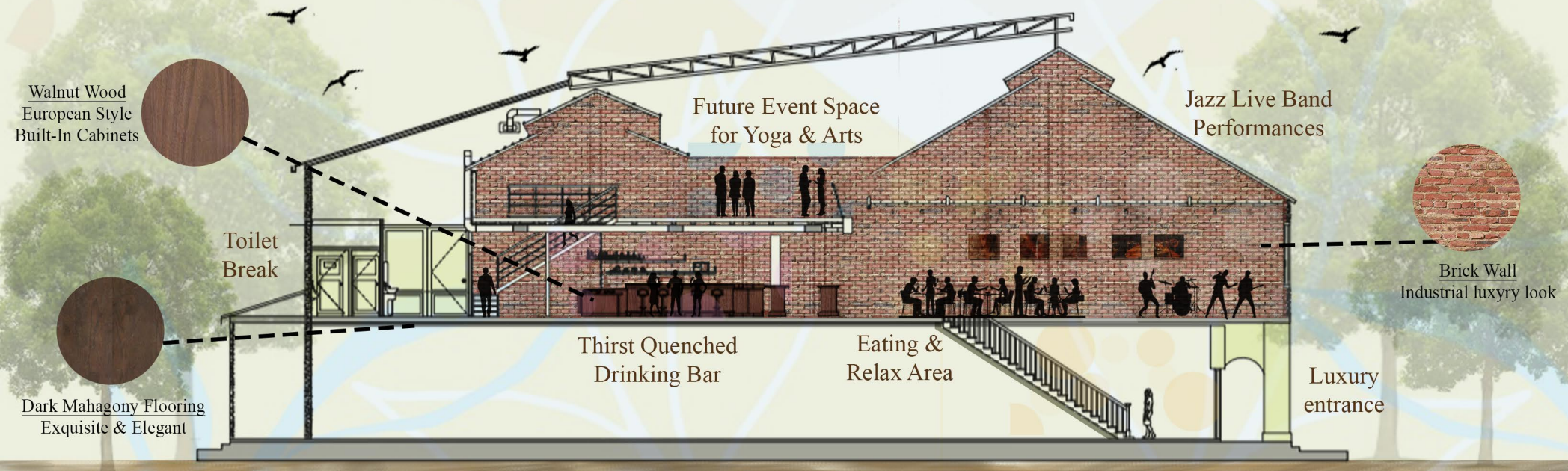
Interior Elevation



Short Section



Long Section



Jao Tim Cafe

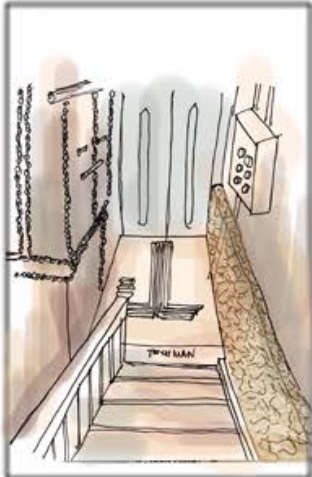
61, Jalan Sultan, City Centre, 50000 Kuala Lumpur, Wilayah Persekutuan Kuala Lumpur



Jao Tim Cafe's Interiors



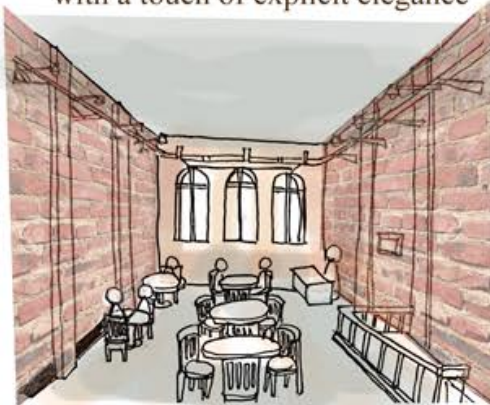
Mezzanine Floor
Future event space,
art gallery and
workspace for yoga
& art classes



Entrance
Gilded Elevator Doors
giving off a luxury
70's New York vibe



Concierge
Extraordinary Ordering Counter
with a touch of explicit elegance



Eatery & Event Area
Irresistible delicacies
to savour in a
spacious environment



Beverages Bar
Trained Barista to
give some sparks
to your drinks

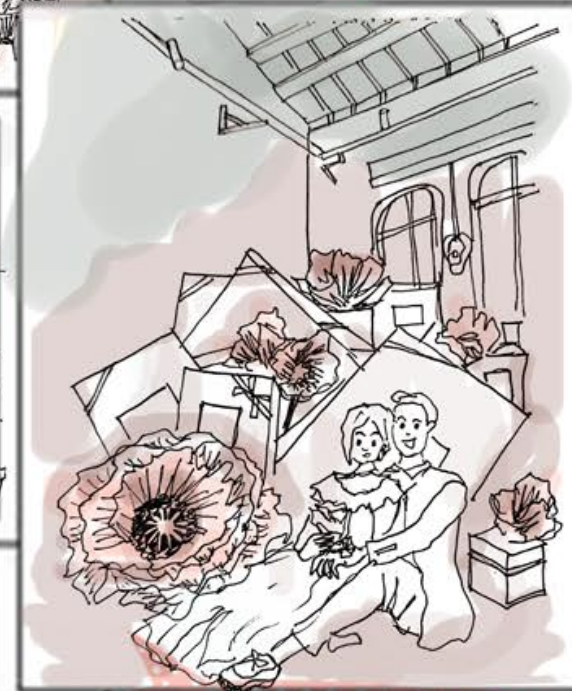
Events at Jao Tim Cafe



Jazz Performances
Relaxing & Soothing
Live Band Music



Swing Dance Classes
Move to the beat and
dance with joy



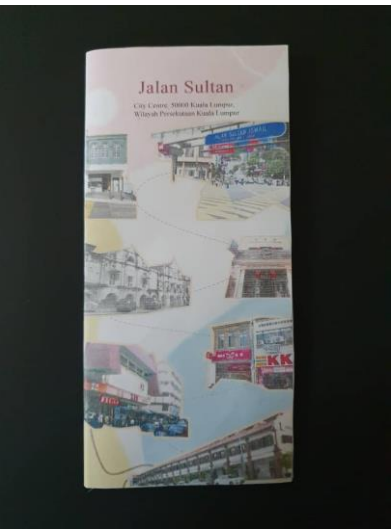
Wedding Ceremonies
Create a lifetime's memory
with beloved ones



Art Exhibition
A place that has no limits
for masterpieces



BROCHURE FOLDING METHOD



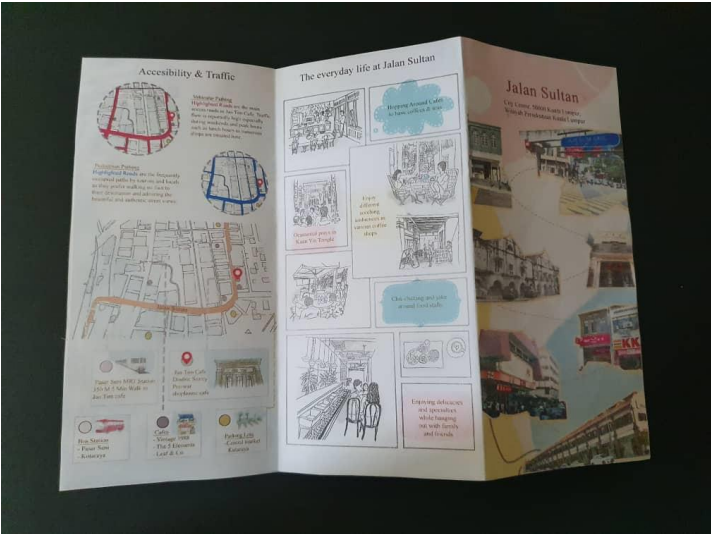
Front Cover



First Page Elevation



First Page Bird's Eye View



First Page Top View



Second Page



Second Page Elevation



Second Page Bird's Eye View



Back Cover

